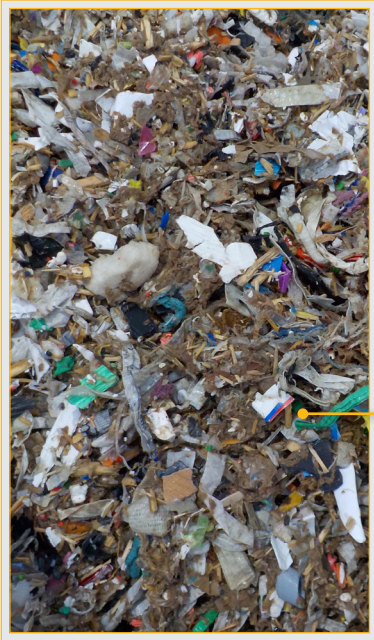


Recycling of Pulper Waste

Reference line: France, approx. 1,5 t/h input capacity

Input: Pulper material



Light fraction (approx. 30%)

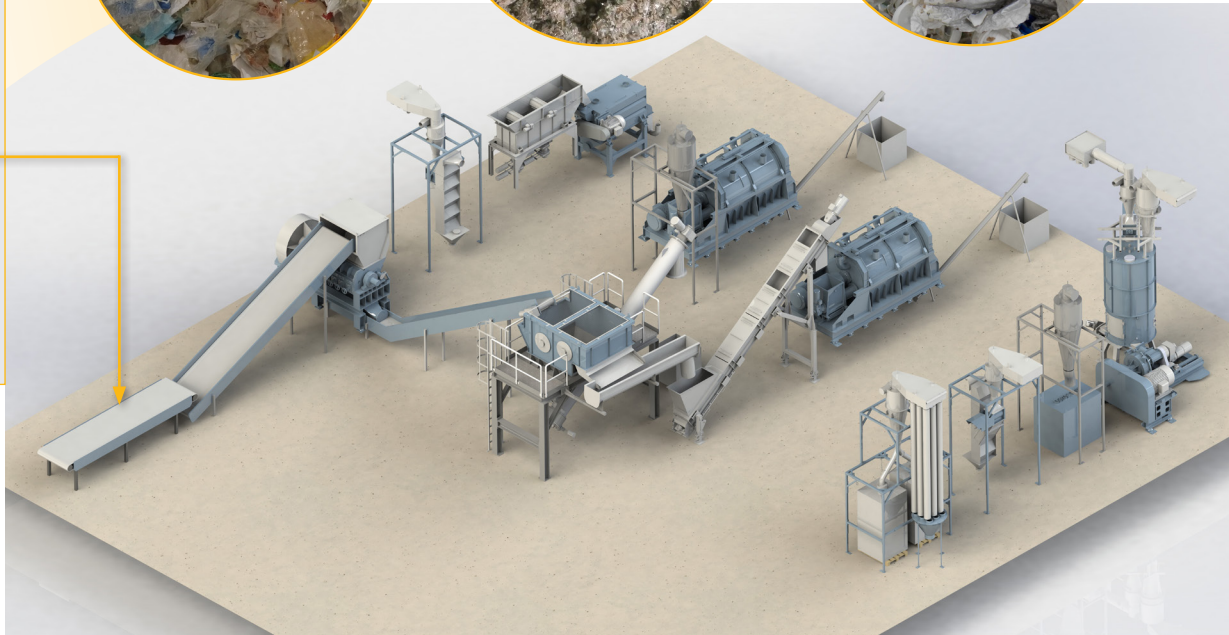


Cellulose (approx. $\geq 50\%$)



PO caps from Tetrapak (approx. 5-10%)

Agglomerate from light fraction:



Technical data:

Input capacity:	approx. 1,5 – 3,5 t/h
Installed power:	approx. 730 – 1.200 kW (approx. 70% consumption)
Dimensions:	up to approx. 40 x 15 x 5,5 m
Water amount:	approx. 0,5 m ³ /h fresh water consumption

Item-No.: 0071037310



Engineering, Manufacturing, Delivery:

HERBOLD Meckesheim GmbH

Industriestrasse 33 | D-74909 Meckesheim
 Fon.: +49 6226 932-0 | Fax: +49 6226 932 495
 herbold@herbold.com | www.herbold.com